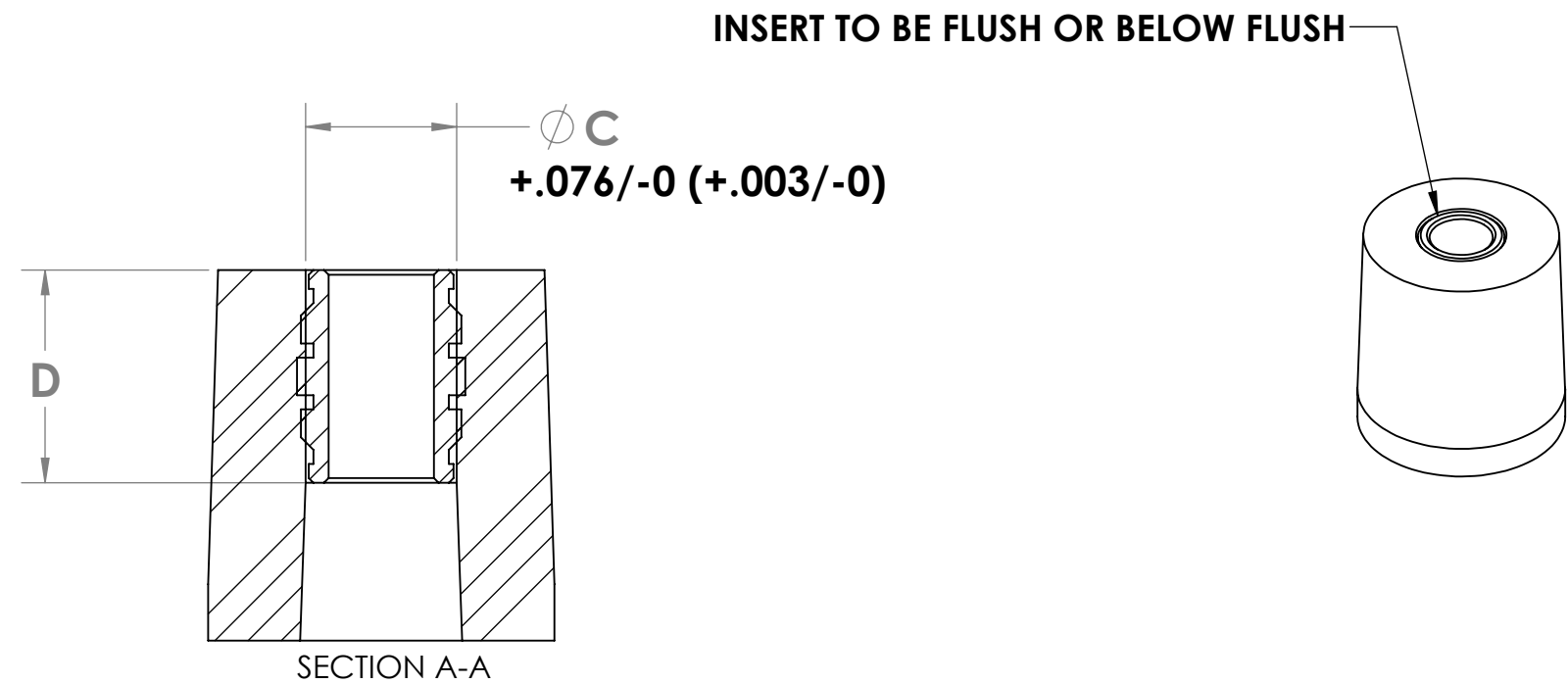
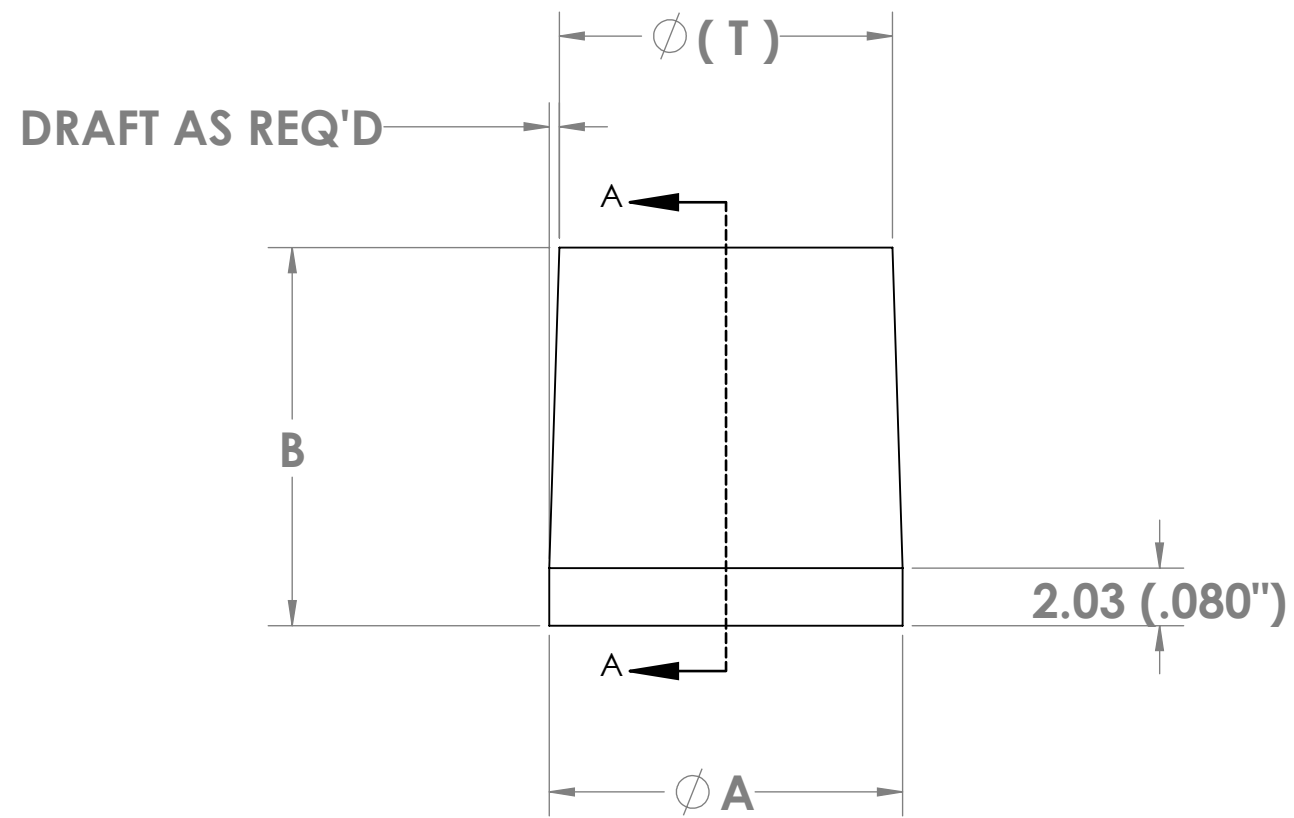


PART NUMBER	THREAD SIZE	MATERIAL	(A) BOSS DIAMETER	(B) BOSS HEIGHT	(C) INSERT HOLE DIAMETER	(D) INSERT LENGTH	(T) BOSS TOP DIAMETER (REFERENCE)	INSERT PART NUMBER
2009003	4-40 UNC	BLACK FIRE RATED HIPS	9.35mm (.368)	10mm (.394)	4.01mm (.158)	5.74mm (.226)	8.81mm (.347)	6635-04BR226
2009021	4-40 UNC	BLACK FIRE RATED HIPS	9.35mm (.368)	13.31mm (.524)	4.01mm (.158)	5.74mm (.226)	8.81mm (.347)	6635-04BR226
2009005	6-32 UNC	BLACK FIRE RATED HIPS	11.00mm (.432)	10mm (.394)	4.80mm (.189)	7.14mm (.281)	10.36mm (.408)	6635-06BR281
2009007	4-40 UNC	DARK GREY ABS UL-V0	9.35mm (.368)	10mm (.394)	4.01mm (.158)	5.74mm (.226)	8.92mm (.350)	6635-04BR226
2009022	4-40 UNC	DARK GREY ABS UL-V0	9.35mm (.368)	13.31mm(.524)	4.01mm (.158)	5.74mm (.226)	8.81mm (.347)	6635-04BR226
2009009	6-32 UNC	DARK GREY ABS UL-V0	11.00mm (.432)	10mm (.394)	4.80mm (.189)	7.14mm (.281)	10.36mm (.408)	6635-06BR281
2010088	6-32 UNC	DARK GREY ABS UL-V0	11.40mm (.448)	7mm (.275)	4.80mm (.189)	3.81mm (.150)	11.02mm (.434)	UB000632-150
2010089	6-32 UNC	BLACK FIRE RATED HIPS	11.40mm (.448)	7mm (.275)	4.80mm (.189)	3.81mm (.150)	11.02mm (.434)	UB000632-150
2010090	4-40 UNC	DARK GREY ABS UL-V0	10.00mm (.394)	7mm (.275)	4.01mm (.158)	5.74mm (.226)	9.45mm (.372)	6635-04BR226
2010091	4-40 UNC	BLACK FIRE RATED HIPS	10.00mm (.394)	7mm (.275)	4.01mm (.158)	5.74mm (.226)	9.45mm (.372)	6635-04BR226



1	1-12-21	NEW TOOL
REV.	DATE	REVISION DESCRIPTION
Main dimensional units are MM Dimensions in (_) are in Inches INSERT HOLE ϕ : $+.76/-0(+.003/-0)$ BOTTOM BOSS DIA.: $\pm.127 (.005)$ TOP BOSS DIA.: $\pm.25 (.010)$ BOSS HEIGHT: $\pm .127 (.005)$		
FMT#	-	CUSTOMER: ENVISION
KB#	-	DESCRIPTION: MOLDED BOSSES
		DRAWING #: 20092010 REV. 1